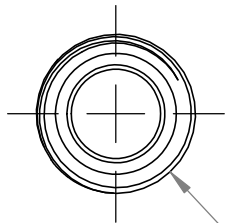


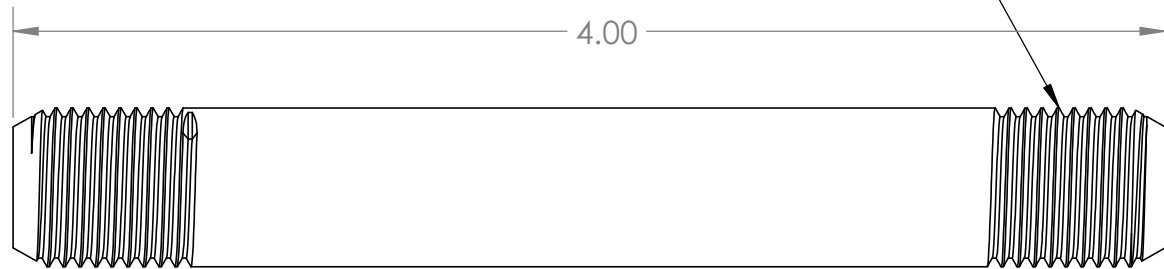


9/16-18 2A Left Hand Thread x2

4.00



Ø .552



PROPRIETARY AND CONFIDENTIAL
 THE INFORMATION CONTAINED IN THIS DRAWING IS THE SOLE PROPERTY OF ULTRA PRESSURE COMPONENTS. ANY REPRODUCTION IN PART OR AS A WHOLE WITHOUT THE WRITTEN PERMISSION OF ULTRA PRESSURE COMPONENTS IS PROHIBITED.

REVISION NOTES AND DATES

UNLESS OTHERWISE SPECIFIED:

ALL DIMENSIONS ARE IN INCHES
 TOLERANCES AS FOLLOWS:
 1 PLACE DECIMAL (.0): ±.030
 2 PLACE DECIMAL (.00): ±.020
 3 PLACE DECIMAL (.000): ±.010
 ANGLES: ±2°

SURFACE FINISH: 63RMS
 BREAK ALL EDGES: .010-.015
 FILLETS & ROUNDINGS: R.015 - 0.30

THREADS UNIFIED CLASS 2A - 2B
 CHAMFER THREADS 45° TO ROOT
 30° CHAMFER IS OPTIONAL
 FOR MALE THREADS ONLY

	NAME	DATE
DRAWN	BM	06/26/2020
CHECKED	KH	06/26/2020
DATE STARTED IN PRODUCTION:		
06/26/2020		



**ULTRA PRESSURE COMPONENTS
 HOUSTON, TX**

TITLE:
 9/16" x 4.0" Medium Pressure Nipple
 20,000 psi

SIZE A	DWG. NO. 5404N-9M4.0	REV 1
------------------	-------------------------	-----------------

SCALE: 1:1	WEIGHT:	SHEET 1 OF 1
------------	---------	--------------