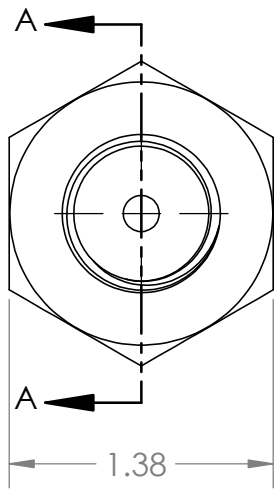
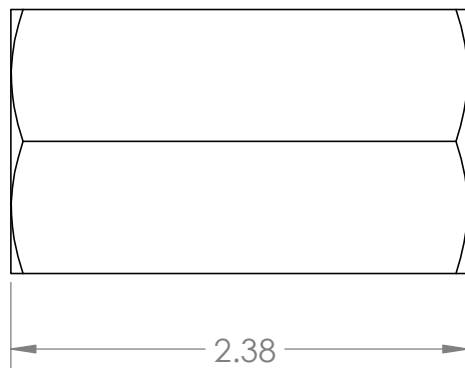
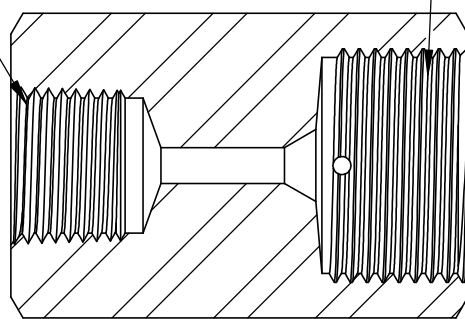


All Parts requiring Gland Nuts & Collars are sold with them included. To order parts without Gland & Collars place a "-WO" to the end of the part number.



1/2"-14 NPT Female  
per MASTER\_8NF

9/16" High Pressure Female  
1-1/8"-12UN Thread  
per MASTER\_9HF



SECTION A-A

REVISION NOTES AND DATES

UNLESS OTHERWISE SPECIFIED:  
ALL DIMENSIONS ARE IN INCHES  
TOLERANCES AS FOLLOWS:  
1 PLACE DECIMAL (.0): ±.030  
2 PLACE DECIMAL (.00): ±.020  
3 PLACE DECIMAL (.000): ±.010  
ANGLES: ±2°

SURFACE FINISH: 63RMS  
BREAK ALL EDGES: .010-.015  
FILLETS & ROUNDINGS: R.015 - 0.30

THREADS UNIFIED CLASS 2A - 2B  
CHAMFER THREADS 45° TO ROOT  
30° CHAMFER IS OPTIONAL  
FOR MALE THREADS ONLY

	NAME	DATE
DRAWN	MH	07/02/2020
CHECKED	KH	07/02/2020
DATE STARTED IN PRODUCTION:		
07/02/2020		

**ULTRA PRESSURE COMPONENTS  
HOUSTON, TX**

TITLE:  
1/2" NPT Female x 9/16" HP Female  
15,000 psi

SIZE <b>A</b>	DWG. NO. 5000-8N9H-WO	REV <b>1</b>
------------------	--------------------------	-----------------

SCALE: 1:1	WEIGHT: 0.79	SHEET 1 OF 1
------------	--------------	--------------



**PROPRIETARY AND CONFIDENTIAL**  
THE INFORMATION CONTAINED IN THIS DRAWING IS THE SOLE PROPERTY OF ULTRA PRESSURE COMPONENTS. ANY REPRODUCTION IN PART OR AS A WHOLE WITHOUT THE WRITTEN PERMISSION OF ULTRA PRESSURE COMPONENTS IS PROHIBITED.