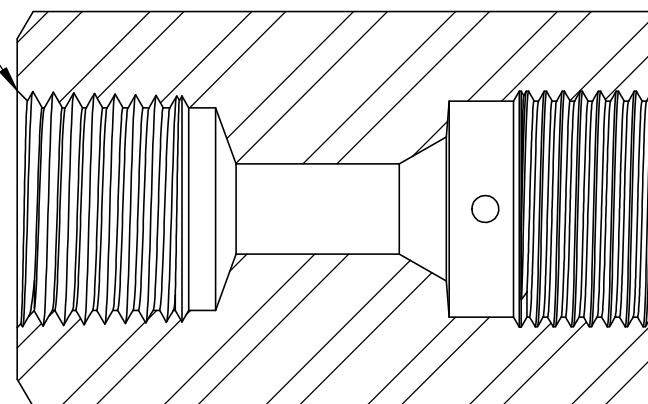


1/2" NPT FEMALE PER
MASTER_8NF rev1



9/16" MP FEMALE PER
MASTER_9MF rev1

SECTION A-A
SCALE 1.5 : 1

REVISION NOTES AND DATES

PROPRIETARY AND CONFIDENTIAL
THE INFORMATION CONTAINED IN THIS DRAWING IS THE SOLE PROPERTY OF ULTRA PRESSURE COMPONENTS. ANY REPRODUCTION IN PART OR AS A WHOLE WITHOUT THE WRITTEN PERMISSION OF ULTRA PRESSURE COMPONENTS IS PROHIBITED.

UNLESS OTHERWISE SPECIFIED:

- 1) DIMENSIONS ARE IN INCHES
- 2) TOLERANCES:
FRACTIONAL $\pm 1/64"$
ANGULAR: MACH $\pm 2^\circ$
ONE PLACE DECIMAL $\pm .020$
TWO PLACE DECIMAL $\pm .010$
THREE PLACE DECIMAL $\pm .005$
- 3) THREADS UNIFIED CLASS 2A - 2B
- 4) SURFACE FINISH 63 μ in Ra
- 5) CHAMFER THREADS:
MALE - 30° TO ROOT
FEMALE - 45° TO ROOT

NAME	DATE
DRAWN MH	7/18/2013
CHECKED KH	10/13/16

DATE STARTED IN PRODUCTION:
10/13/16



**ULTRA PRESSURE COMPONENTS
HOUSTON, TX**

TITLE:
1/2" NPT FEMALE X 9/16" MP FEMALE
15,000 PSI

SIZE A	DWG. NO. 5000-8N9M	REV 1
------------------	------------------------------	-----------------

SCALE: 1.5:1 WEIGHT: 0.58 SHEET 1 OF 1