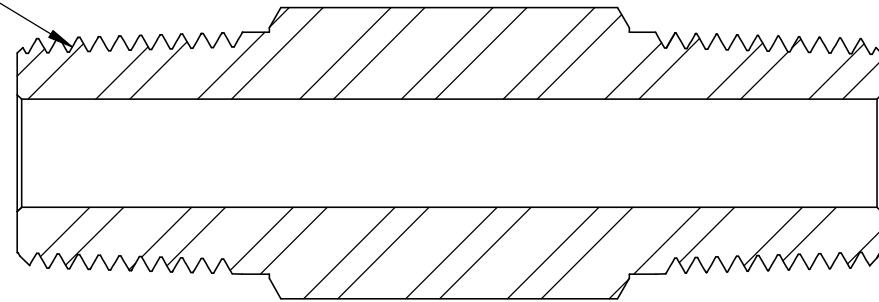


1/2"-14NPT Male
(Both Ends)
per MASTER_8NM



SECTION A-A

REVISION NOTES AND DATES

UNLESS OTHERWISE SPECIFIED:

- 1) DIMENSIONS ARE IN INCHES
- 2) TOLERANCES:
 FRACTIONAL $\pm 1/64"$
 ANGULAR: MACH $\pm 2^\circ$
 ONE PLACE DECIMAL $\pm .020$
 TWO PLACE DECIMAL $\pm .010$
 THREE PLACE DECIMAL $\pm .005$
- 3) THREADS UNIFIED CLASS
 2A - 2B
- 4) SURFACE FINISH 63uIn Ra
- 5) CHAMFER THREADS:
 MALE - 30° TO ROOT
 FEMALE - 45° TO ROOT

	NAME	DATE
DRAWN	MH	9/22/2017
CHECKED	KH	9/22/2017
DATE STARTED IN PRODUCTION:		
9/22/2017		

**ULTRA PRESSURE COMPONENTS
HOUSTON, TX**

TITLE:
1/2" NPT Male X 3" Hex Nipple
15,000 psi

SIZE	DWG. NO.	REV
A	5404-8N8N-3.0	Y

SCALE: 1.5:1 WEIGHT: 0.38 SHEET 1 OF 1



PROPRIETARY AND CONFIDENTIAL
 THE INFORMATION CONTAINED IN THIS DRAWING IS THE SOLE PROPERTY OF ULTRA PRESSURE COMPONENTS. ANY REPRODUCTION IN PART OR AS A WHOLE WITHOUT THE WRITTEN PERMISSION OF ULTRA PRESSURE COMPONENTS IS PROHIBITED.